

# BROW PIGMENTS

## INORGANIC LIQUID



Mimosa ● 18 ml cod. E15-60  
Neutral Blond 7 ml cod. E5-60

Beautiful honey blonde. Mimosa pigment has a neutral undertone, which makes it perfect for use on all blonde clients, with fair skin phototype (Fitzpatrick 1) and natural really blond brow hair.



Moscow mule ● 18 ml cod. E15-61  
Neutral Light Brown 7 ml cod. E5-61

Beautiful dark blond / light brown. Moscow Mule pigment has a neutral undertone, which makes it perfect for use on all clients with light skin (phototype Fitzpatrick 2) and natural dark blond brow hair.



Sex on the beach ● 18 ml cod. E15-62  
Neutral Brown 7 ml cod. E5-62

Beautiful medium brown. Sex on the Beach pigment has a neutral undertone, which makes it perfect for use on all clients with intermediate skin (phototype Fitzpatrick 3-4) and natural medium brown brow hair.



Martini ● 18 ml cod. E15-63  
Neutral Dark Brown 7 ml cod. E5-63

Beautiful dark brown. Martini pigment has a neutral undertone, which makes it perfect for use on all clients with medium to dark skin (phototype Fitzpatrick 4 - 5) and natural dark brown brow hair.



Cosmopolitan ● 18 ml cod. E15-64  
Neutral Extra Dark Brown 7 ml cod. E5-64

Beautiful extra dark brown/almost black. Cosmopolitan pigment has a neutral undertone, which makes it perfect for use on all clients with medium to dark skin (phototype Fitzpatrick 4 - 5 - 6) and natural extra dark brown brow hair.

● Neutral ● Warm

# BROW PIGMENTS

## INORGANIC CREAMY



Moscow ● 18 ml cod. E15-02  
Neutral Blond 7 ml cod. E5-02

Neutral blond color for eyebrows. Moscow is ideal for working on fair skin and blond eyebrows. The color has a prevalence of yellow and a neutral undertone.



Ibiza ● 18 ml cod. E15-05  
Neutral Light Brown 7 ml cod. E5-05

Neutral light brown color for eyebrows. Ibiza has a neutral tendency which makes it ideal for working on all neutral skins with light brown eyebrows. Do not use it on warm skin tones.



Paris ● 18 ml cod. E15-08  
Neutral Brown 7 ml cod. E5-08

Neutral brown color for eyebrows. Paris has a neutral tendency which makes it ideal for working on all neutral skins with brown eyebrows. Do not use it on warm skin tones.



Milan ● 18 ml cod. E15-11  
Neutral Dark Brown 7 ml cod. E5-11

Neutral dark brown color for eyebrows. Milan has a neutral tendency which makes it ideal for working on all neutral skins with dark brown eyebrows. Do not use it on warm or cold skin undertones.



Venice ● 18 ml cod. E15-14  
Neutral Extra Dark Brown 7 ml cod. E5-14

Neutral dark brown color for eyebrows. Venice has a neutral tendency which makes it ideal for working on all neutral skins (i.e. not tending to red or green) with very dark eyebrows.

● Neutral ● Warm

# BROW PIGMENTS

## HYBRID LONG LASTING



**Spritz** ● 15 ml cod. E15-65  
*Warm Blond*

Neutral blond color for eyebrows. Moscow is ideal for working on fair skin and blond eyebrows. The color has a prevalence of yellow and a neutral undertone.



**Piña colada** ● 15 ml cod. E15-66  
*Warm Ligth Brown*

Neutral light brown color for eyebrows. Ibiza has a neutral tendency which makes it ideal for working on all neutral skins with light brown eyebrows. Do not use it on warm skin tones.



**Margarita** ● 15 ml cod. E15-67  
*Warm Brown*

Neutral brown color for eyebrows. Paris has a neutral tendency which makes it ideal for working on all neutral skins with brown eyebrows. Do not use it on warm skin tones.



**Mojito** ● 15 ml cod. E15-68  
*Warm Dark Brown*

Neutral dark brown color for eyebrows. Milan has a neutral tendency which makes it ideal for working on all neutral skins with dark brown eyebrows. Do not use it on warm or cold skin understons.

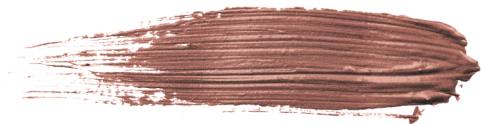


**Bellini** ● 15 ml cod. E15-69  
*Warm Extra Dark Brown*

Neutral dark brown color for eyebrows. Venice has a neutral tendency which makes it ideal for working on all neutral skins (i.e. not tending to red or green) with very dark eyebrows.

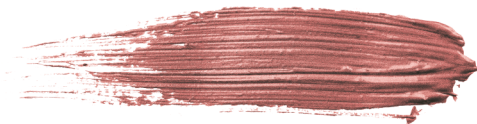
● Neutral ● Warm

# LIP PIGMENTS



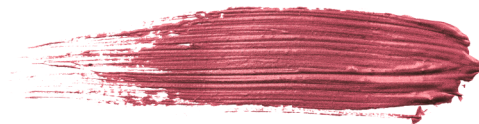
Glacè 18 ml cod. E15-41  
7 ml cod. E5-41

Brownish lip color. Ideal for lips outlining and contouring.



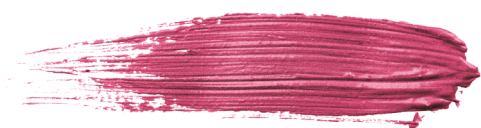
Romantic 18 ml cod. E15-42  
7 ml cod. E5-42

Nude light brown lip color.



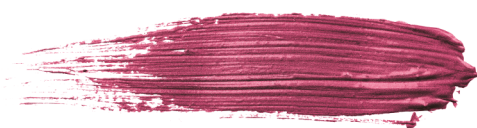
Love 18 ml cod. E15-43  
7 ml cod. E5-51

Love is a medium pink lip color, that right touch of color to wear on any occasion.



Lollipop 18 ml cod. E15-44  
7 ml cod. E5-44

Lollipop is a intermediate purplish pink lip color. Perfect and versatile to be shown off on any occasion.



Super Model 18 ml cod. E15-45  
7 ml cod. E5-45

Supermodel is a lip color with raspberry vibes.



Rebel 18 ml cod. E15-49  
7 ml cod. E5-49

Rebel is vibrant and intense violet fuchsia lip color.



Bite 18 ml cod. E15-48  
7 ml cod. E5-48

Bite is a bright pink lip color.



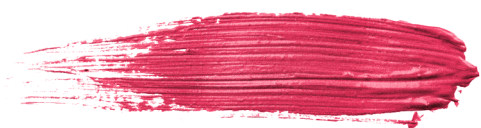
Parfum 18 ml cod. E15-46  
7 ml cod. E5-46

Parfum is a natural antique pink lip color.



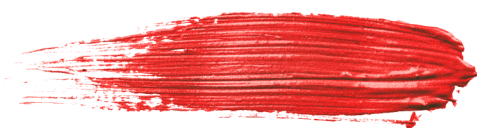
Bubble 18 ml cod. E15-47  
7 ml cod. E5-57

Bubble is a soft warm pink lip color.



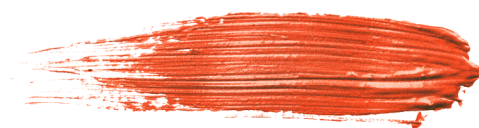
Dream 18 ml cod. E15-50  
7 ml cod. E5-50

Dream is a bright cherry lip color.



Sexy 18 ml cod. E15-51  
7 ml cod. E5-51

Sexy is a fier red lip color. A great classic, the red lipstick, emblem of femininity and sensuality.



Casinò 18 ml cod. E15-52  
7 ml cod. E5-52

Casinò is an orange peach lip color. Ideal dark lips.

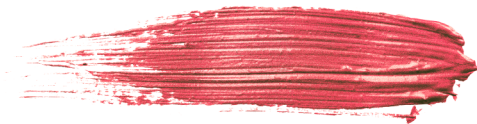
# LIP PIGMENTS



Summer

18 ml cod. E15-53  
7 ml cod. E5-53

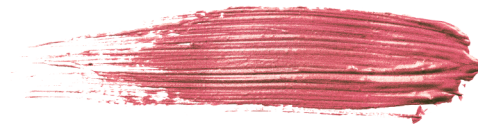
Summer is a bright coral shade with a pink touch lip color.



Daiquiri

18 ml cod. E15-54  
7 ml cod. E5-54

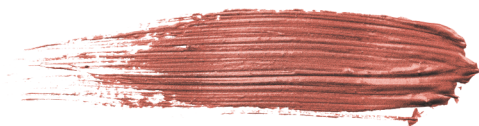
Daiquiri is a lip color in shades of bright coral.



Flower

18 ml cod. E15-55  
7 ml cod. E5-55

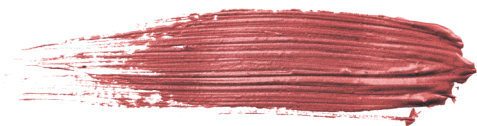
Flower is a nude lip color with a peach accent. Reminds us of the velvet petals during blossom.



Kelly

18 ml cod. E15-56  
7 ml cod. E5-56

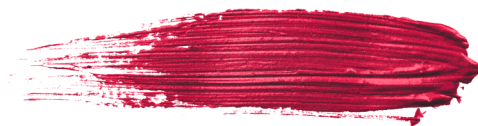
Kelly is a nude shade with peachy vibes.



Passion

18 ml cod. E15-57  
7 ml cod. E5-57

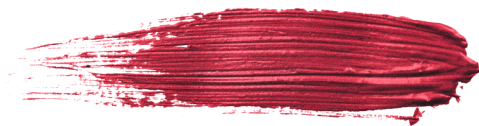
Passion is a nude shade with pink vibes lip color, an irresistible must-have to wear every day.



Fashion

18 ml cod. E15-58  
7 ml cod. E5-58

Fashion is a bright cherry lip color.



Bordeaux

18 ml cod. E15-59  
7 ml cod. E5-59

Bordeaux/cool red lip color.

# EYES PIGMENTS



## Warm Black

18 ml cod. E15-34  
7 ml cod. E5-34

Warm Black: Permanent makeup color for eyes and eyeliner. Biotek's Warm Black pigment is an intense and warm black, ideal for graphic eyeliners and infrolashes.



## Royal Black

18 ml cod. E15-35  
7 ml cod. E5-35

Royal Black: Permanent makeup color for eyes and eyeliner. Biotek's Royal Black pigment is a long-lasting intense black, ideal for graphic eyeliners and infrolashes.



## Deep Ocean EXTRA EU ONLY

18 ml cod. E15-40  
7 ml cod. E5-40

Deep Ocean: Permanent makeup color for eyes and eyeliner. Biotek's Deep Ocean pigment is an intense blue, ideal for a graphic eyeliner or a shaded eyeliner.



## Blue Sky

EXTRA EU ONLY

18 ml cod. E15-38  
7 ml cod. E5-38

Blue sky: Permanent makeup color for eyes and eyeliner. Biotek's Blue Sky pigment is a cool light blue, ideal for a graphic eyeliner or a shaded eyeliner.

# SKIN PIGMENTS



## Fair 1

18 ml cod. E15-25  
7 ml cod. E5-25

Fair 1 is a skin color for permanent makeup and microblading.  
The Fair 1 pigment from Biotek is a very light skin color, with a slight pinkish tendency.



## Fair 2

18 ml cod. E15-26  
7 ml cod. E5-26

Fair 2 is a skin color for permanent makeup and microblading.  
The Fair 2 pigment from Biotek is a very light skin color, with a slight pinkish tendency.



## Fair 3

18 ml cod. E15-27  
7 ml cod. E5-27

Fair 3 is a skin color for permanent makeup and microblading.  
The Fair 3 pigment from Biotek is a light skin color, with a slight pinkish tendency.



## Medium 1

18 ml cod. E15-28  
7 ml cod. E5-28

Medium 1 is a skin color for permanent makeup and microblading.  
Biotek Medium 1 pigment is an intermediate skin color with a slight yellow undertone.



## Medium 2

18 ml cod. E15-29  
7 ml cod. E5-29

Medium 2 is a skin color for permanent makeup and microblading.  
Biotek Medium 2 pigment is an intermediate skin color with a slight yellow undertone.



## Medium 3

18 ml cod. E15-30  
7 ml cod. E5-30

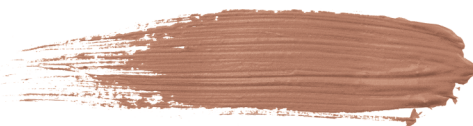
Medium 3 is a skin color for permanent makeup and microblading.  
Biotek Medium 3 pigment is an intermediate skin color with a slight yellow undertone.



## Tan 1

18 ml cod. E15-31  
7 ml cod. E5-31

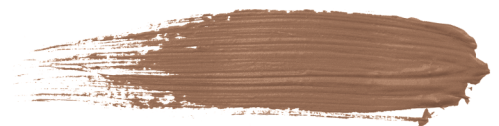
Tan 1 is a skin color for permanent makeup and microblading.  
The Tan 1 pigment by Biotek is a deep skin color with a slight orange tendency.



## Tan 2

18 ml cod. E15-32  
7 ml cod. E5-32

Tan 2 is a skin color for permanent makeup and microblading.  
The Tan 2 pigment by Biotek is a deep skin color with a slight orange tendency.



## Tan 3

18 ml cod. E15-33  
7 ml cod. E5-33

Tan 3 is a skin color for permanent makeup and microblading.  
The Tan 3 pigment by Biotek is a deep skin color with a slight orange tendency.

# MIXING & CORRECTOR



**Orange** 18 ml cod. E15-18  
7 ml cod. E5-18

Orange is a mixing color/modifier for permanent make-up and microblading pigments. Biotek's Orange color can be added to another color, in the capsule, to make it warmer.



**Green** 18 ml cod. E15-21  
7 ml cod. E5-21

Green: is a mixing color for permanent make-up and microblading pigments. The Green color of Biotek can be added to another color, in the capsule, to make it colder. Green, added to another eyebrow color, is ideal for correcting red eyebrows.



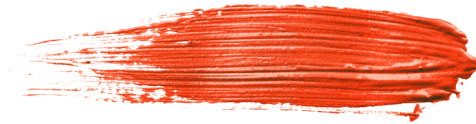
**Ocra** 18 ml cod. E15-22  
7 ml cod. E5-22

Ocra is a corrector for permanent makeup and microblading. Ocra color by Biotek is used to correct eyebrows turned to gray and purple. Use it pure and apply it only in the areas to be corrected.



**Safari** 18 ml cod. E15-23  
7 ml cod. E5-23

Safari is a permanent makeup and microblading corrector. Biotek's Safari color is used to correct old PMU treatments on the lips. It is ideal for covering dark areas due to the deep implantation of pigments.



**Orange red** 18 ml cod. E15-24  
7 ml cod. E5-24

Orange red is a corrector for permanent makeup and microblading. The Biotek Orange Red color is used to correct and neutralize dark pigmentation on lips. Apply Orange Red pure to the areas where the lip is darker and then, in the same session, cover the entire lip with another color from the Biotek range.



**White** 18 ml cod. E15-16  
7 ml cod. E5-16

Biotek's White pigment can be used to create beautiful highlights on lips, eyebrows and paramedical procedures.